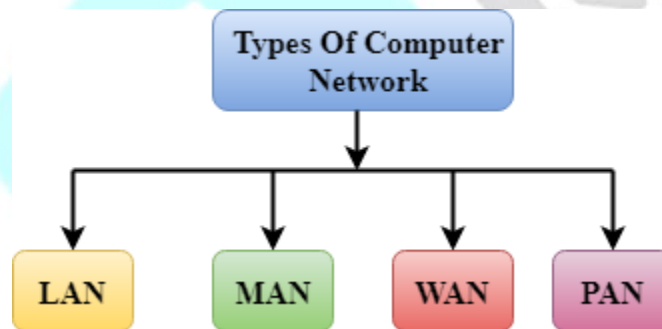


Internet

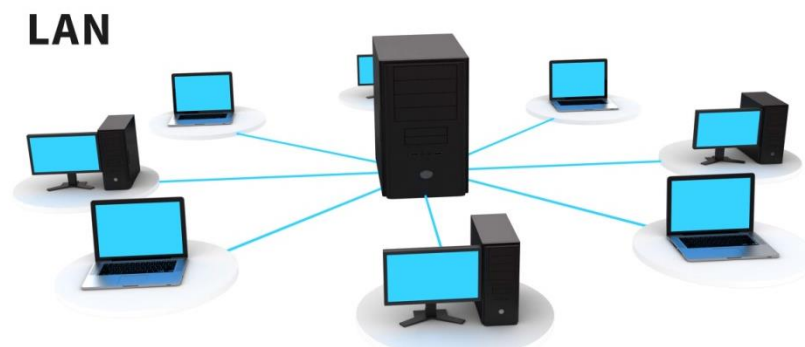
Internet

The Internet is a globally connected network system that facilitates communication and data services through a vast collection of private, public, business, academic, and government networks.

- Internet is a computer networks made up of millions of networks worldwide.
- No one knows exactly how many computer are connected to the internet.
- It is certain , however, that these number in the millions and are increasing at a rapid rate.
- These computer are connected by phone lines, fiber optic lines, coaxial cable , satellites and wireless connections.



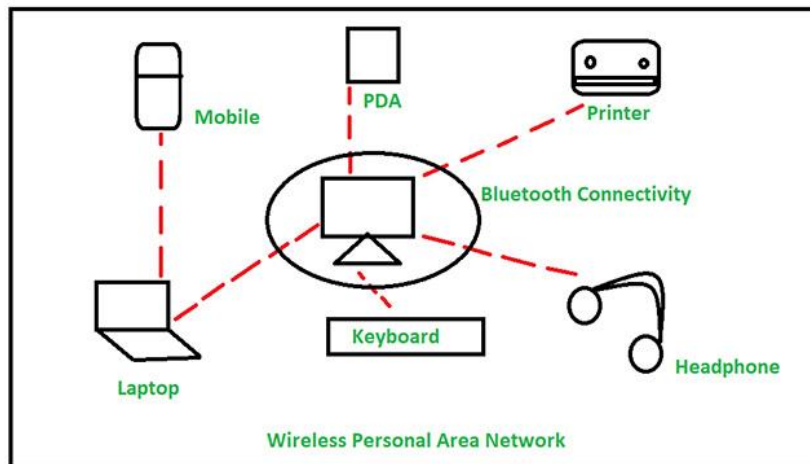
LAN (Local area network)- A group of computer connected to each other in a small area such as building office. It provides higher security. The data is transferred at an extremely faster rate in local area network.



Internet

www.sunriseedu.co.in

PAN (Personal area network) – A network arranged within an individual person, typically within a range of 10 meters. The computer devices of personal use is known as personal area network.

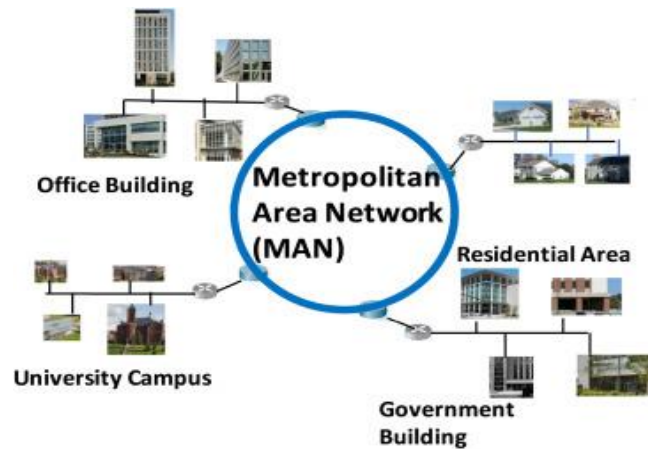


There are two types of PAN

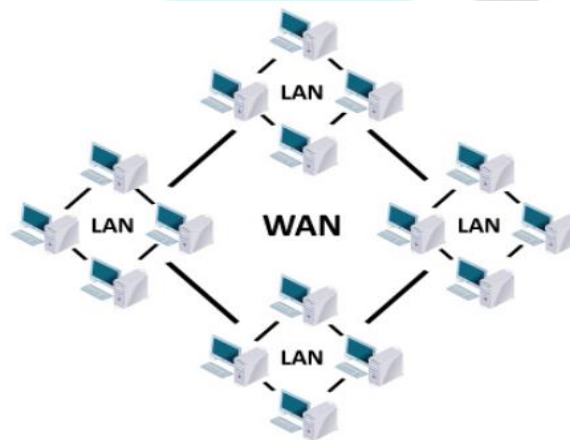
- 1) Wired personal area network- Is created by using the USB.
- 2) Wireless personal area network- Is developed by simply using wireless technologies such as wi-fi, Bluetooth. It is a low range network.

MAN (Metropolitan area network)- A network that covers a larger geographic area by interconnecting a different LAN to form a larger network. It has a higher range than LAN (Local area network).

Internet



WAN (Wide area network)- A network that extends over a large geographical area such as states or countries. Is quite bigger network than the LAN. The internet is one of the biggest WAN in the world.



Need of internet

The internet has now become a significant part of the daily life of a modern person.

The considerable importance of the internet is unlimited knowledge that you can on the internet, whatever you need, video calling , paying for various services and buying your favorite products at any time.

It has made almost limitless possibilities in all areas of any field.

Internet

www.sunriseedu.co.in

Device to use internet

1. Smart TV in every room.
2. Android phone.
3. Wifi router.
4. Chrome.

Modem

Modem or broadband modem is a hardware device that connects a computer or router to a broadband network.

Ex- A cable modem and DSL modem are two example of these types of modem.

Short for modulator / demodulator a modem.

A computer to send and receive information over telephone lines.

Browser (A Web browser commonly referred to as a browser) is application software for accessing the WWW (World Wide Web).

Like- Desktops, Laptops, Tablets and Smartphones.

Types of Browser

1. Google Chrome Browser
2. Opera Browser
3. Opera Mini Browser
4. UC Browser
5. Quick Browser
6. Microsoft EdgeBrowser
7. Internet Explorer
8. Mozilla Firefox

Introduction of WWW

Internet

www.sunriseedu.co.in

A network is a structure linking computer together for purpose of sharing information and services.

What is website?

A group of interlinked and well structured Web pages/HTML Pages/Internet pages that exist on the same domain is called websites.

Websites- Can contain single or thousand pages.

Two types of websites

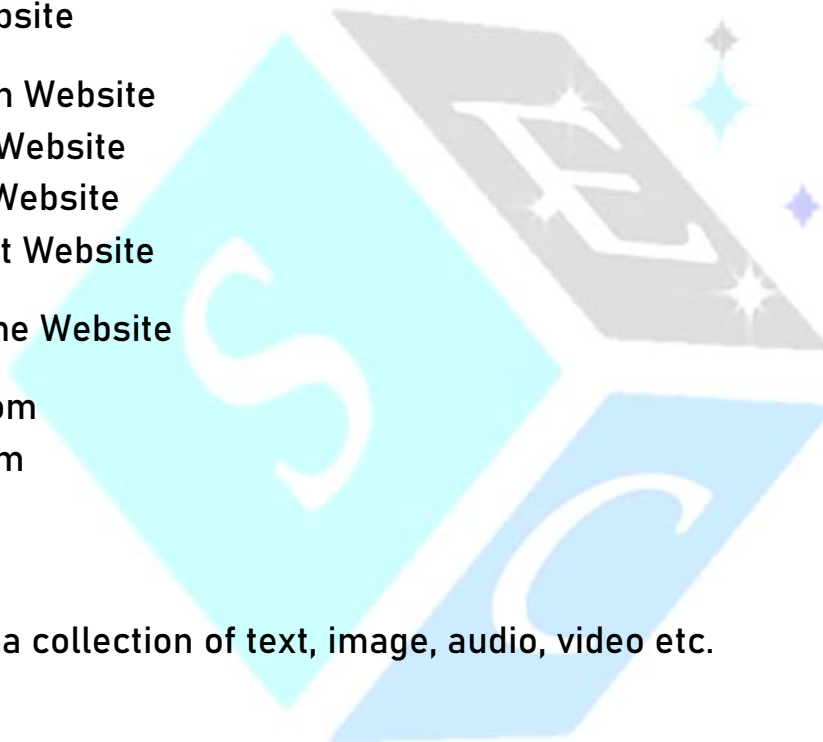
1. Personal Website

- Institution Website
- Hospital Website
- Railway Website
- Bus ticket Website

2. Search Engine Website

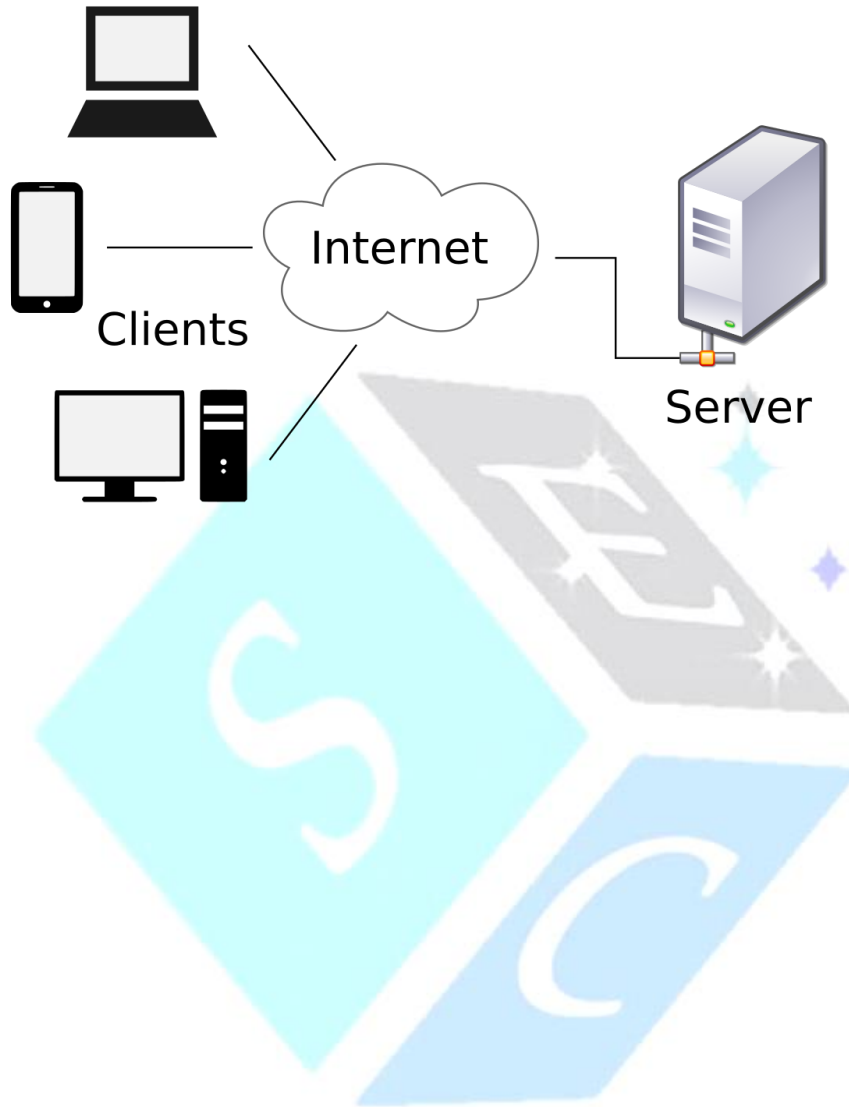
- google.com
- yahoo.com
- bing.com
- msn.com

Webpage- It is a collection of text, image, audio, video etc.



Internet

Server and Clients



CLIENT VERSUS SERVER

CLIENT	SERVER
A device or a program that requires services via the web	A device or a program that responds to the requests of the clients by providing services to them
Requests the server for content or service function	Provides functions or services to the clients when the client request for services
Ex: desktops, laptops, smartphones, tablets and web browsers	Ex: database servers, file servers, and web servers

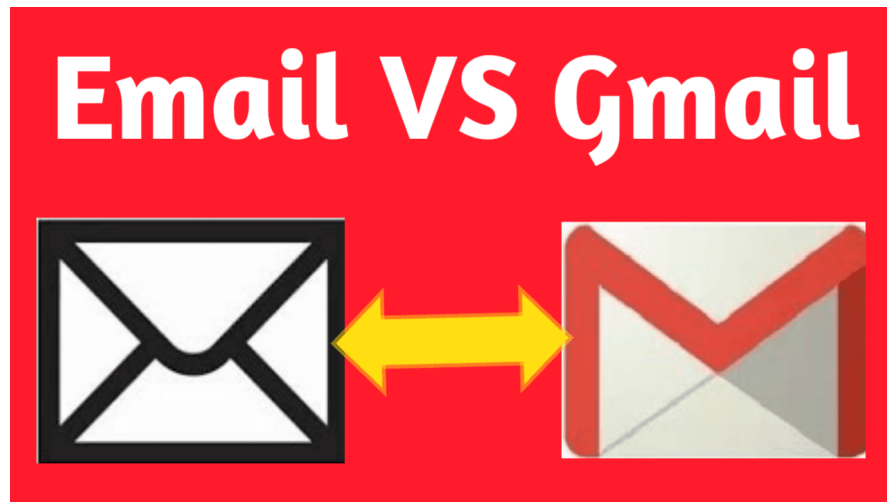
Different between Email and Gmail

Email	Gmail
Email refers to Electronic mail.	Gmail refers to Google Mail.
It is process of sending and receiving electronic messages that may contain text, graphics, images or videos.	It is a platform through which Email can be sent or received.
It is used to transfer or exchange messages over a communication network like an internet.	It provides various features such as email reminder, virus protection, spam filtering, and many others.
It is a method of exchanging information.	It is like many other email systems comes with web and POP based interfaces.
It has a sync time every four hours per day.	It has only a maximum sync time of only one hour per day.
It shows URLs as tap-able links.	It does not support tap-able links.

Internet

www.sunriseedu.co.in

It is not involved with advertisements.	It is involved with advertising to a broad audience by getting paid.
It has the facility to set peak sync times selecting days or even weeks.	It does not has this facility.



What is different between CC and BCC ?

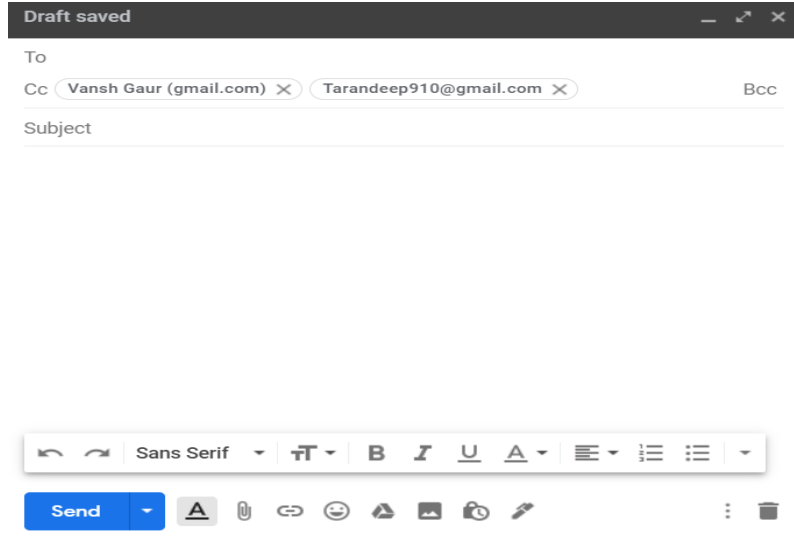
In this article, we will discuss two important aspects of E-mail i.e CC and BCC which are used to send and receive information securely via e-mail.

1. Carbon Copy (CC) :

CC stands for Carbon Copy It is mainly used to send E mail's carbon copy to the recipients and each recipient will able to see the list of all other recipients. When we want to send an email to someone without addressing them personally, then CC is used. Even for group communication, we use CC as it will keep management and employees in the loop without concern them directly. When we want to receive a response from recipients associated with the email, CC is used. CC also help to inform other recipients about the email.

Example :

Internet



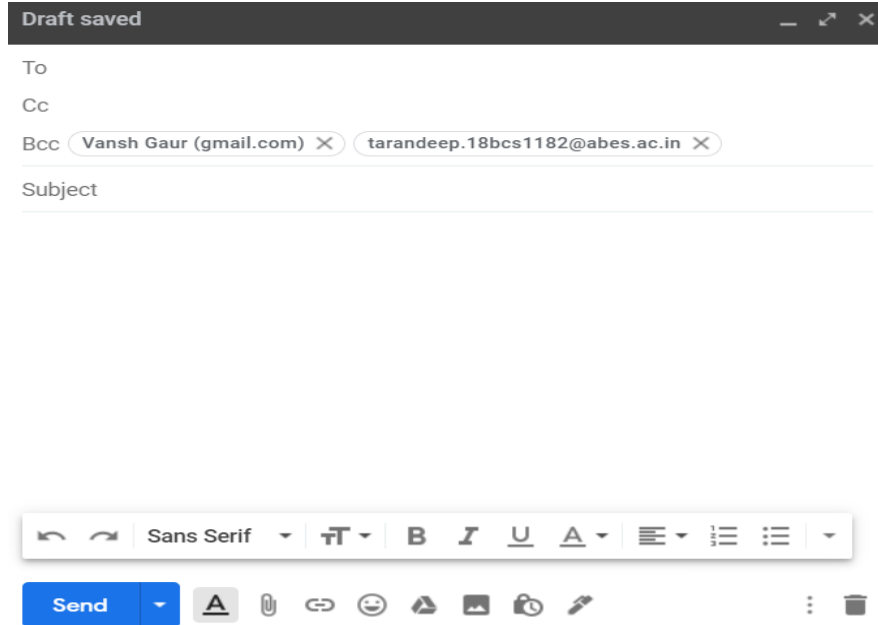
In the above example, we keep Vansh and Taran in CC. This means both Vansh and Taran can see each others mail address and know that they get same mail from sender.

2. Blind Carbon Copy (BCC) :

BCC stands for Blind Carbon Copy. It is mainly used to send E mail's carbon copy to the multiple recipients but each recipient will not be able to see the list of all other recipients. When we want to send email to large number of recipients, BCC is used. BCC provides privacy of each recipients as they will not be able to see each others mail address. It is mostly used in large organizations for sharing companies newsletter etc. Even if we want to send impersonal emails then BCC is useful.

Example :

Internet



In the above example, we keep Vansh and Taran in BCC. This means neither Vansh nor Taran will be able to see each other's mail address and will not be sure if other person received same mail.

Difference between CC and BCC :

S.No.	CC	BCC
1	It stands for Carbon Copy.	It stands for Blind Carbon Copy.
2	In CC, all recipients will be able to see each other mail address.	Whereas, in BCC none of the recipient will be able to see each other mail address.
3	Using CC, we can keep management and employees in the loop.	Using BCC, we can ensure the privacy of management and employees mail address.
4	Every recipient will get all additional responses to the email.	Here recipient will not get any additional responses until we forward the mail to them
5	It permits recipients to know with whom the mail is being shared.	Here, recipients don't have any idea with whom mail is being shared.

Internet

www.sunriseedu.co.in

Gmail

- Inbox - Inbox is the folder where all incoming emails are stored.
- Sentmail - Sent Box is the place where emails you have sent are stored.
- Compose - Compose is used to create and write a new email message.
- Draft -Draft is a message you wrote but saved without sending.
- Trace – Trace means to find or follow something.
- Spam - Spam in email means unwanted or junk messages.

